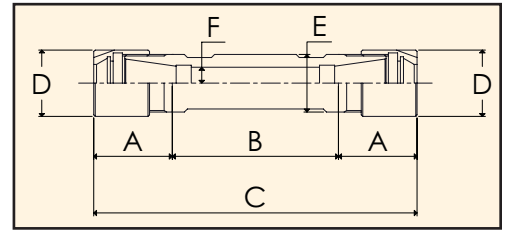
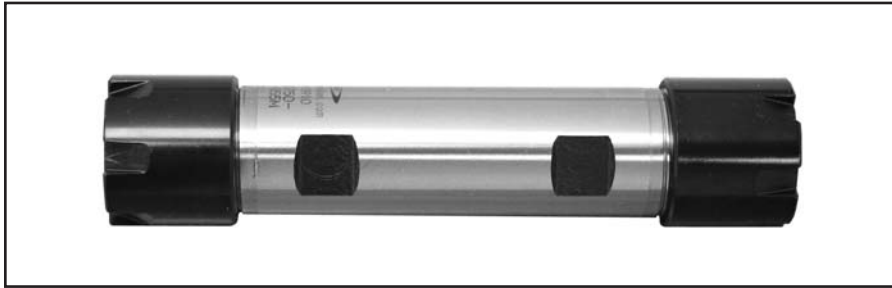


ER Straight Shank

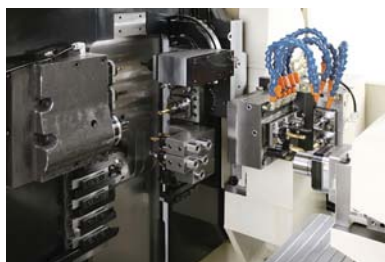
DOUBLE ENDED straight shank with flat and mini-style Hi-Q nut



Part Number	ER Size	Nut style	Shank Type	A mm (inch)	B mm (inch)	C mm (inch)	Nut Dia. D mm (inch)	Shank Dia. E mm (inch)	F mm (inch)	Machine
SDF-0625-ER08-015M	ER8	Mini	With Flat	15 (.591")	15 (.591")	45 (1.772")	12 (.472")	15.875 (.625")	2.6 (.102")	☼
SDF-0625-ER08-025M	ER8	Mini	With Flat	15 (.591")	25 (.984")	55 (2.165")	12 (.472")	15.875 (.625")	2.6 (.102")	☼
SDF-0016-ER11-050M	ER11	Mini	With Flat	20 (.787")	50 (1.969")	90 (3.543")	16 (.630")	16 (.630")	3.75 (.148")	★
SDF-0750-ER11-040M	ER11	Mini	With Flat	20 (.787")	40 (1.575")	80 (3.150")	16 (.630")	19.05 (.750")	3.75 (.148")	X
SDF-0750-ER11-070M	ER11	Mini	With Flat	20 (.787")	70 (2.756")	110 (4.331")	16 (.630")	19.05 (.750")	3.75 (.148")	X
SDF-0750-ER11-090M	ER11	Mini	With Flat	20 (.787")	90 (3.543")	130 (5.118")	16 (.630")	19.05 (.750")	3.75 (.148")	X
SDF-0020-ER11-030M	ER11	Mini	With Flat	20 (.787")	30 (1.181")	70 (2.756")	16 (.630")	20 (.787")	3.75 (.148")	□
SDF-0020-ER11-050M	ER11	Mini	With Flat	20 (.787")	50 (1.969")	90 (3.543")	16 (.630")	20 (.787")	3.75 (.148")	□
SDF-0750-ER16-055M	ER16	Mini	With Flat	26 (1.024")	55 (2.165")	107 (4.213")	22 (.866")	19.05 (.750")	5.25 (.207")	X
SDF-0020-ER16-055M	ER16	Mini	With Flat	26 (1.024")	55 (2.165")	107 (4.213")	22 (.866")	20 (.787")	5.25 (.207")	□
SDF-0022-ER16-055M	ER16	Mini	With Flat	28 (1.102")	55 (2.165")	111 (4.370")	22 (.866")	22 (.866")	5.25 (.207")	★, □
SDF-0022-ER16-075M	ER16	Mini	With Flat	28 (1.102")	75 (2.953")	131 (5.157")	22 (.866")	22 (.866")	5.25 (.207")	★, □
SDF-0025-ER16-062M	ER16	Mini	With Flat	28 (1.102")	62 (2.441")	118 (4.646")	22 (.866")	25 (.984")	5.25 (.207")	☼
SDF-1000-ER16-062M	ER16	Mini	With Flat	28 (1.102")	62 (2.441")	118 (4.646")	22 (.866")	25.4 (1.00")	5.25 (.207")	○
SDF-0032-ER20-055M	ER20	Mini	With Flat	28 (1.102")	55 (2.165")	111 (4.370")	28 (1.102")	32 (1.260")	6.75 (.266")	various
SDF-0032-ER20-075M	ER20	Mini	With Flat	28 (1.102")	75 (2.953")	131 (5.157")	28 (1.102")	32 (1.260")	6.75 (.266")	various

Machine Key: Citizen - X, Miyano - ○, Tsugami - □, Star - ★, Tornos - ☼

ER Straight Shank Application Examples



Accessories:



ER Collets
Pages 46-53



ER Torque Wrench
Page 55



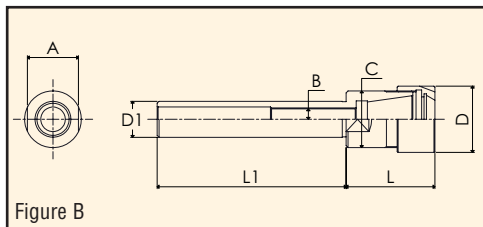
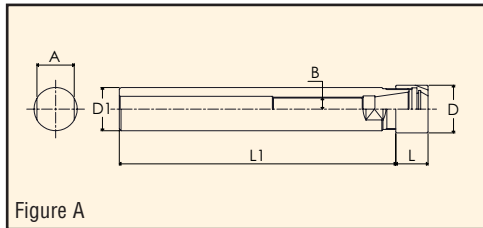
ER Back Up Screw
Page 55



ER Nut
Page 54

ER Straight Shank

SINGLE ENDED straight shank with mini style Hi-Q nut



Part Number	ER Size	Nut style	Shank Type	A mm(inch)	B Dia. mm(inch)	C mm(inch)	Shank Dia. D1 mm(inch)	Nut Dia. D mm(inch)	L1 mm(inch)	L mm(inch)	Fig.	Machine
SS-0008-ER08-080M	ER8	Mini	Round	8 (.315")	3 (.118")	10 (.394")	8 (.315")	12 (.472")	80 (3.150")	26 (1.024")	B	various
SS-0375-ER08-070M	ER8	Mini	Round	8 (.315")	M5 thread	10 (.394")	9.52 (.375")	12 (.472")	70 (2.756")	23 (.906")	B	X
SS-0012-ER08-080M	ER8	Mini	Round	10 (.394")	5.2 (.205")	-	12 (.472")	12 (.472")	86.2 (3.394")	10.8 (.425")	A	various
SS-0006-ER11-045M	ER11	Mini	Round	11 (.433")	-	13 (.512")	6 (.236")	16 (.630")	45 (1.772")	26.5 (1.043")	B	various
SS-0007-ER11-045M	ER11	Mini	Round	11 (.433")	-	13 (.512")	7 (.276")	16 (.630")	45 (1.772")	26.5 (1.043")	B	various
SS-0008-ER11-055M	ER11	Mini	Round	11 (.433")	4 (.157")	13 (.512")	8 (.315")	16 (.630")	56 (2.205")	26.5 (1.043")	B	various
SS-0500-ER11-140M	ER11	Mini	Round	11 (.433")	M6 thread	13 (.512")	12.7 (.500")	16 (.630")	140 (5.512")	29.5 (1.161")	B	various
SS-0625-ER11-150M	ER11	Mini	Round	14 (.551")	M8 P1 thread	-	15.875 (.625")	16 (.630")	160.5 (6.319")	12 (.472")	A	☼
SS-0016-ER11-150M	ER11	Mini	Round	14 (.551")	M8 P1 thread	-	16 (.630")	16 (.630")	159 (6.260")	12 (.472")	A	★
SS-0010-ER16-060M	ER16	Mini	Round	17 (.669")	5.2 (.205")	19 (.748")	10 (.394")	22 (.866")	60 (2.362")	38.5 (1.516")	B	various
SS-0012-ER16-080M	ER16	Mini	Round	17 (.669")	7 (.276")	19 (.748")	12 (.472")	22 (.866")	80 (3.150")	38.5 (1.516")	B	various
SS-0500-ER16-140M	ER16	Mini	Round	17 (.669")	M6 thread	19 (.748")	12.7 (.500")	22 (.866")	140 (5.512")	37 (1.457")	B	various
SS-0750-ER16-155M	ER16	Mini	Round	17 (.669")	M12 P1 thread	-	19.05 (.750")	22 (.866")	163 (6.417")	18.5 (.728")	A	X
SS-0020-ER16-155M	ER16	Mini	Round	17 (.669")	M12 P1 thread	-	20 (.787")	22 (.866")	163 (6.417")	18.5 (.728")	A	□
SS-0015-ER20-100M	ER20	Mini	Round	22 (.866")	8.5 (.335")	24 (.945")	15 (.591")	28 (1.102")	100 (3.937")	42.5 (1.673")	B	various
SS-0016-ER20-100M	ER20	Mini	Round	22 (.866")	8.5 (.335")	24 (.945")	16 (.630")	28 (1.102")	100 (3.937")	42.5 (1.673")	B	★
SS-0025-ER20-155M	ER20	Mini	Round	22 (.866")	M14 P1 thread	-	25 (.984")	28 (1.102")	162.5 (6.398")	19 (.748")	A	☼
SS-1000-ER20-155M	ER20	Mini	Round	22 (.866")	M14 P1 thread	-	25.4 (1.00")	28 (1.102")	162.5 (6.398")	19 (.748")	A	X, ○
SS-0750-ER25-100M	ER25	Mini	Round	27 (1.063")	M12 P1 thread	30 (1.181")	19.05 (.750")	35 (1.378")	100 (3.937")	47 (1.850")	B	X

Machine Key: Citizen - X, Miyano - ○, Tsugami - □, Star - ★, Tornos - ☼

Accessories:



ER Collets
Pages 46-53



ER Torque Wrench
Page 55



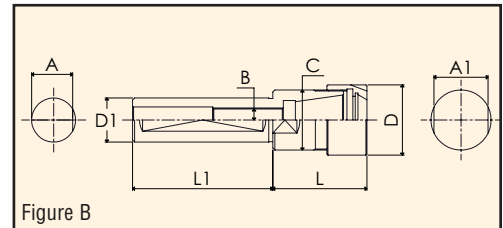
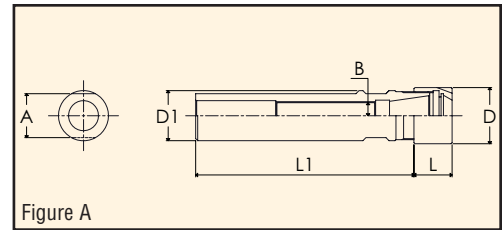
ER Back Up Screw
Page 55



ER Nut
Page 54

ER Straight Shank

SINGLE ENDED straight shank with flat and mini style Hi-Q nut



Part Number	ER Size	Shank Type	A /A1 mm (inch)	B dia. mm(inch)	C mm(inch)	Shank Dia.D1 mm(inch)	Nut Dia.D mm(inch)	L1 mm(inch)	L mm(inch)	Fig.	Machine
SSF-0625-ER08-043M	ER8	w/Flat	14 (.551")	M5 thread	-	15.875 (.625")	12 (.472")	47.2 (1.858")	10.8 (.425")	A	⊗
SSF-0016-ER11-038M	ER11	w/Flat	14 (.551")	M8 P1 thread	-	16 (.630")	16 (.630")	46(1.811")	12 (.472")	A	★
SSF-0016-ER11-140M	ER11	w/Flat	14 (.551")	M8 P1 thread	-	16 (.630")	16 (.630")	148 (5.827")	12 (.472")	A	★
SSF-0750-ER11-115M	ER11	w/Flat	17 (.669")	M8 P1 thread	-	19.05 (.750")	16 (.630")	123 (4.843")	12 (.472")	A	X
SSF-0016-ER16-035M	ER16	w/Flat	15/17 (.591"/.669")	M8 P1 thread	19 (.748")	16 (.630")	22 (.866")	35 (1.378")	28 (1.102")	B	★
SSF-0750-ER16-038M	ER16	w/Flat	17 (.669")	M12 P1 thread	-	19.05 (.750")	22 (.866")	47.5 (1.870")	18.5 (.728")	A	X
SSF-0750-ER16-050M	ER16	w/Flat	17 (.669")	M12 P1 thread	-	19.05 (.750")	22 (.866")	59.5 (2.343")	18.5 (.728")	A	X
SSF-0750-ER16-070M	ER16	w/Flat	17 (.669")	M12 P1 thread	-	19.05 (.750")	22 (.866")	79.5 (3.130")	18.5 (.728")	A	X
SSF-0750-ER16-120M	ER16	w/Flat	17 (.669")	M12 P1 thread	-	19.05 (.750")	22 (.866")	129.5 (5.098")	18.5 (.728")	A	X
SSF-0750-ER16-140M	ER16	w/Flat	17 (.669")	M12 P1 thread	-	19.05 (.750")	22 (.866")	149.5 (5.886")	18.5 (.728")	A	X
SSF-0020-ER16-050M	ER16	w/Flat	17 (.669")	M12 P1 thread	-	20 (.787")	22 (.866")	59.5 (2.343")	18.5 (.728")	A	□
SSF-0020-ER16-070M	ER16	w/Flat	17 (.669")	M12 P1 thread	-	20 (.787")	22 (.866")	79.5 (3.130")	18.5 (.728")	A	□
SSF-0020-ER16-120M	ER16	w/Flat	17 (.669")	M12 P1 thread	-	20 (.787")	22 (.866")	129.5 (5.098")	18.5 (.728")	A	□
SSF-0020-ER16-140M	ER16	w/Flat	17 (.669")	M12 P1 thread	-	20 (.787")	22 (.866")	149.5 (5.886")	18.5 (.728")	A	□
SSF-0022-ER16-038M	ER16	w/Flat	19 (.748")	M12 P1 thread	-	22 (.866")	22 (.866")	47.5 (1.870")	18.5 (.728")	A	★, □
SSF-0022-ER16-070M	ER16	w/Flat	19 (.748")	M12 P1 thread	-	22 (.866")	22 (.866")	79.5 (3.130")	18.5 (.728")	A	★, □
SSF-0022-ER16-100M	ER16	w/Flat	19 (.748")	M12 P1 thread	-	22 (.866")	22 (.866")	109.5 (4.311")	18.5 (.728")	A	★, □
SSF-0025-ER16-065M	ER16	w/Flat	22 (.866")	M12 P1 thread	-	25 (.984")	22 (.866")	74.5 (2.933")	18.5 (.728")	A	⊗
SSF-1000-ER16-065M	ER16	w/Flat	22 (.866")	M12 P1 thread	-	25.4 (1.00")	22 (.866")	74.5 (2.933")	18.5 (.728")	A	X, ○
SSF-1000-ER16-075M	ER16	w/Flat	22 (.866")	M12 P1 thread	-	25.4 (1.00")	22 (.866")	84.5 (3.327")	18.5 (.728")	A	X, ○
SSF-1000-ER16-100M	ER16	w/Flat	22 (.866")	M12 P1 thread	-	25.4 (1.00")	22 (.866")	109.5 (4.311")	18.5 (.728")	A	X, ○
SSF-0022-ER20-080M	ER20	w/Flat	20.5/22 (.807"/.866")	M12 P1 thread	24 (.945")	22 (.866")	28 (1.102")	80 (3.150")	39 (1.535")	B	★, □
SSF-0025-ER20-100M	ER20	w/Flat	22 (.866")	M14 P1 thread	-	25 (.984")	28 (1.102")	109 (4.291")	19 (.748")	A	⊗
SSF-0025-ER20-154M	ER20	w/Flat	22 (.866")	M14 P1 thread	-	25 (.984")	28 (1.102")	163 (6.417")	19 (.748")	A	⊗
SSF-1000-ER20-100M	ER20	w/Flat	22 (.866")	M14 P1 thread	-	25.4 (1.00")	28 (1.102")	109 (4.291")	19 (.748")	A	X, ○
SSF-1000-ER20-140M	ER20	w/Flat	22 (.866")	M14 P1 thread	-	25.4 (1.00")	28 (1.102")	149 (5.866")	19 (.748")	A	X, ○
SSF-0022-ER25-070M	ER25	w/Flat	20.5/27 (.807"/1.063")	M14 P1 thread	30 (1.181")	22 (.866")	35 (1.378")	70 (2.756")	47 (1.850")	B	★, □
SSF-0025-ER25-075M	ER25	w/Flat	23.5/27 (.925"/1.063")	M14 P1 thread	30 (1.181")	25 (.984")	35 (1.378")	75 (2.953")	47 (1.850")	B	⊗
SSF-0025-ER25-145M	ER25	w/Flat	23.5/27 (.925"/1.063")	M14 P1 thread	30 (1.181")	25 (.984")	35 (1.378")	145 (5.709")	36 (1.417")	B	⊗
SSF-0032-ER25-070M	ER25	w/Flat	27 (1.063")	M18 P1.5 thread	-	32 (1.260")	35 (1.378")	80 (3.150")	20 (.787")	A	various

Machine Key: Citizen - X, Miyano - ○, Tsugami - □, Star - ★, Tornos - ⊗

Accessories:



ER Collets
Pages 46-53



ER Torque Wrench
Page 55



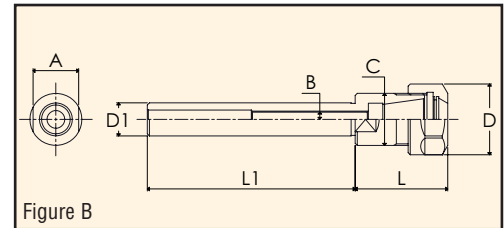
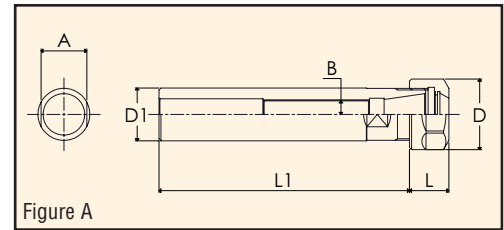
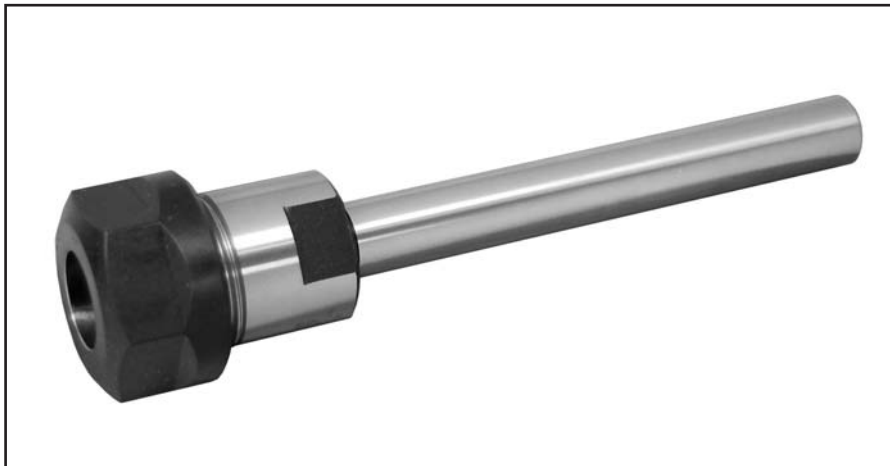
ER Back Up Screw
Page 55



ER Nut
Page 54

ER Straight Shank

SINGLE ENDED straight shank with standard Hi-Q nut



Part Number	ER Size	Shank Type	A /A1 mm (inch)	B dia. mm(inch)	C mm(inch)	Shank Dia.D1 mm(inch)	Nut Dia.D mm(inch)	L1 mm(inch)	L mm(inch)	Fig.	Machine
SS-0500-ER11-070	ER11	Round	11 (.433")	M6 thread	14 (.551")	12.7 (.500")	19 (.748")	70 (2.756")	28.5 (1.122")	B	various
SS-0500-ER16-100	ER16	Round	19 (.748")	M6 thread	22 (.866")	12.7 (.500")	28 (1.102")	100 (3.937")	36 (1.417")	B	various
SS-0014-ER16-060	ER16	Round	19 (.748")	M6 thread	22 (.866")	14 (.551")	28 (1.102")	60 (2.362")	36.5 (1.437")	B	various
SS-0625-ER16-060	ER16	Round	19 (.748")	M8 P1 thread	22 (.866")	15.875 (.625")	28 (1.102")	60 (2.362")	36.5 (1.437")	B	☼
SS-0016-ER16-060	ER16	Round	19 (.748")	M8 P1 thread	22 (.866")	16 (.630")	28 (1.102")	60 (2.362")	36.5 (1.437")	B	various
SS-0750-ER16-050	ER16	Round	19 (.748")	M12 P1 thread	22 (.866")	19.05 (.750")	28 (1.102")	50 (1.969")	30.5 (1.201")	B	X
SS-0750-ER16-100	ER16	Round	19 (.748")	M12 P1 thread	22 (.866")	19.05 (.750")	28 (1.102")	100 (3.937")	30.5 (1.201")	B	X
SS-0020-ER16-050	ER16	Round	19 (.748")	M12 P1 thread	22 (.866")	20 (.787")	28 (1.102")	50 (1.969")	30.5 (1.201")	B	□
SS-0020-ER16-100	ER16	Round	19 (.748")	M12 P1 thread	22 (.866")	20 (.787")	28 (1.102")	100 (3.937")	30.5 (1.201")	B	□
SS-0500-ER20-100	ER20	Round	22 (.866")	M6 thread	25 (.984")	12.7 (.500")	34 (1.339")	100 (3.937")	44.5 (1.752")	B	various
SS-0625-ER20-100	ER20	Round	22 (.866")	M8 P1 thread	25 (.984")	15.875 (.625")	34 (1.339")	100 (3.937")	44.5 (1.752")	B	☼
SS-0750-ER20-060	ER20	Round	22 (.866")	M12 P1 thread	25 (.984")	19.05 (.750")	34 (1.339")	60 (2.362")	36.5 (1.437")	B	X
SS-0020-ER20-030	ER20	Round	22 (.866")	M12 P1 thread	25 (.984")	20 (.787")	34 (1.339")	30 (1.181")	36.5 (1.437")	B	□
SS-0020-ER20-060	ER20	Round	22 (.866")	M12 P1 thread	25 (.984")	20 (.787")	34 (1.339")	60 (2.362")	36.5 (1.437")	B	□
SS-1000-ER20-100	ER20	Round	22 (.866")	M14 P1 thread	-	25.4 (1.00")	34 (1.339")	120.5 (4.744")	19 (.748")	A	various
SS-0750-ER25-050	ER25	Round	27 (1.063")	M12 P1 thread	32 (1.260")	19.05 (.750")	42 (1.654")	50 (1.969")	47 (1.850")	B	X
SS-0020-ER25-050	ER25	Round	27 (1.063")	M12 P1 thread	32 (1.260")	20 (.787")	42 (1.654")	50 (1.969")	47 (1.850")	B	□
SS-0020-ER25-100	ER25	Round	27 (1.063")	M12 P1 thread	32 (1.260")	20 (.787")	42 (1.654")	100 (3.937")	47 (1.850")	B	□
SS-0025-ER25-050	ER25	Round	27 (1.063")	M18 P1.5 thread	32 (1.260")	25 (.984")	42 (1.654")	50 (1.969")	47 (1.850")	B	☼
SS-0025-ER25-100	ER25	Round	27 (1.063")	M18 P1.5 thread	32 (1.260")	25 (.984")	42 (1.654")	100 (3.937")	47 (1.850")	B	☼
SS-1000-ER25-050	ER25	Round	27 (1.063")	M18 P1.5 thread	32 (1.260")	25.4 (1.00")	42 (1.654")	50 (1.969")	47 (1.850")	B	X, ○
SS-1000-ER25-100	ER25	Round	27 (1.063")	M18 P1.5 thread	32 (1.260")	25.4 (1.00")	42 (1.654")	100 (3.937")	47 (1.850")	B	X, ○
SS-0030-ER25-050	ER25	Round	27 (1.063")	M18 P1.5 thread	32 (1.260")	30 (1.181")	42 (1.654")	50 (1.969")	42 (1.654")	B	various
SS-0020-ER32-050	ER32	Round	36 (1.417")	M12 P1 thread	40 (1.575")	20 (.787")	50 (1.969")	50 (1.969")	54 (2.126")	B	□
SS-0020-ER32-100	ER32	Round	36 (1.417")	M12 P1 thread	40 (1.575")	20 (.787")	50 (1.969")	100 (3.937")	54 (2.126")	B	□
SS-0025-ER32-050	ER32	Round	36 (1.417")	M18 P1.5 thread	40 (1.575")	25 (.984")	50 (1.969")	50 (1.969")	54 (2.126")	B	☼
SS-1000-ER32-050	ER32	Round	36 (1.417")	M18 P1.5 thread	40 (1.575")	25.4 (1.00")	50 (1.969")	50 (1.969")	53 (2.087")	B	X, ○
SS-0030-ER32-050	ER32	Round	36 (1.417")	M22 P1.5 thread	40 (1.575")	30 (1.181")	50 (1.969")	50 (1.969")	53 (2.087")	B	various
SS-1250-ER32-060	ER32	Round	36 (1.417")	M22 P1.5 thread	40 (1.575")	31.75 (1.25")	50 (1.969")	60 (2.362")	53 (2.087")	B	□
SS-0025-ER40-050	ER40	Round	45 (1.772")	M18 P1.5 thread	50 (1.969")	25 (.984")	63 (2.480")	50 (1.969")	60 (2.362")	B	☼
SS-1000-ER40-050	ER40	Round	45 (1.772")	M18 P1.5 thread	50 (1.969")	25.4 (1.00")	63 (2.480")	50 (1.969")	60 (2.362")	B	X, ○

Machine Key: Citizen - X, Miyano - ○, Tsugami - □, Star - ★, Tornos - ☼

Accessories:



ER Collets
Pages 46-53



ER Torque Wrench
Page 55



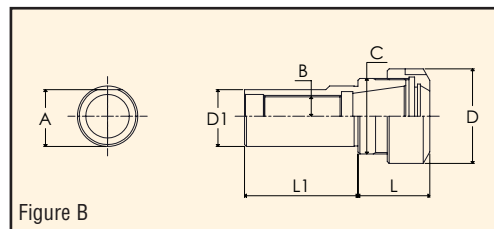
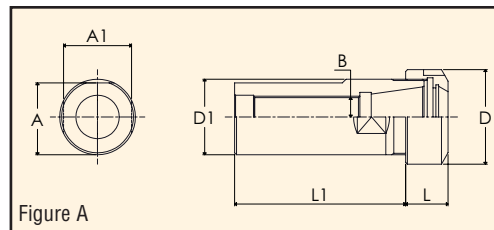
ER Back Up Screw
Page 55



ER Nut
Page 54

ER Straight Shank

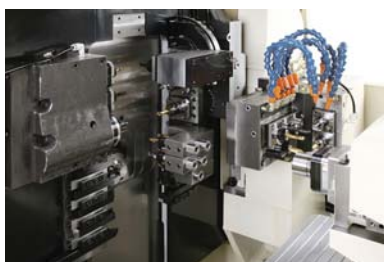
SINGLE ENDED straight shank with flat and standard Hi-Q nut



Part Number	ER Size	Nut style Shank	Shank Type	A/A1 mm (inch)	B dia. mm (inch)	C mm (inch)	Shank dia. D1 mm (inch)	Nut dia. D mm (inch)	L1 mm (inch)	L mm (inch)	Fig.	Machine
SSF-0032-ER25-060	ER25	Std	w/Flat	30 (1.181")	M18 P1.5 thread	-	32	42 (1.654")	72 (2.835")	20 (.787")	A	various
SSF-0032-ER32-060	ER32	Std	w/Flat	30 (1.181")	M22 P1.5 thread	40 (1.575")	32	50 (1.969")	60 (2.362")	38 (1.496")	B	various
SSF-0040-ER32-080	ER32	Std	w/Flat	38/36 (1.496"/1.417")	M22 P1.5 thread	-	40	50 (1.969")	90.5 (3.563")	22.5 (.886")	A	various
SSF-0040-ER40-075	ER40	Std	w/Flat	38/44 (1.496"/1.732")	M22 P1.5 thread	50 (1.969")	40	63 (2.480")	75 (2.953")	55 (2.165")	B	various

Machine Key: Citizen - X, Miyano - O, Tsugami - □, Star - ★, Tornos - ⚙

ER Straight Shank Application Examples



Accessories:



ER Collets
Pages 46-53



ER Torque Wrench
Page 55



ER Back Up Screw
Page 55



ER Nut
Page 54